

PROTOTYPING GOTHENBURG
- the city as an exhibition

A FLOATING LIVING UNIT

ANNA



WITH THE SUPPORT OF 



**10 PERSONS
MAXIMUM ON BOARD**

**ALL KIDS
WITH ADULTS**

**NO USE OF TOILETS,
WATER & ELECTRICITY**



PROTOTYPING GOTHENBURG

- the city as an exhibition

A SOCIAL FLOATING FARM

ANNA

ANNA IS INTENDED TO HOST NEWCOMERS TO FOSTER SOCIAL INCLUSION & ENVIRONMENTAL SUSTAINABILITY.

NEXT TO THE MARINE ALLOTMENT GARDEN FLYTEVI, ANNA STANDS AS A SEA FARMER'S RESIDENCE. PROTOTYPE FOR SOCIAL SUSTAINABILITY AND SUSTENANCE SYSTEM, IT ADRESSES CLIMATE CHANGE AND THE FUTURE RISE OF SEA LEVELS. IT IS PART OF THE RESEARCH-ACTION PROJECT MERGING, FINANCED BY THE

HORIZON 2020 PROGRAM OF THE EUROPEAN UNION UNDER THE GRANT AGREEMENT N°101004535.

WITH THE SUPPORT OF THE UNIVERSITY OF GOTHENBURG, THE HOUSEBOAT WAS DESIGNED BY THE FRENCH NGO QUATORZE AND BUILT IN A SOCIAL BUILDING PROCESS BY 20 VOLUNTEERS, GUIDED BY EGNAHEMSFABRIKEN, IN THE AUTUMN OF 2022. ALONG WITH FIRST TO KNOW & EDUCATION

MARINA, WE EXPLORED HOW A SMALL HOME ON WATER CAN FUNCTION, AND HOW IT CAN BE ECOLOGICALLY BUILT THROUGH COLLABORATIVE EFFORTS.

MORE INFOS

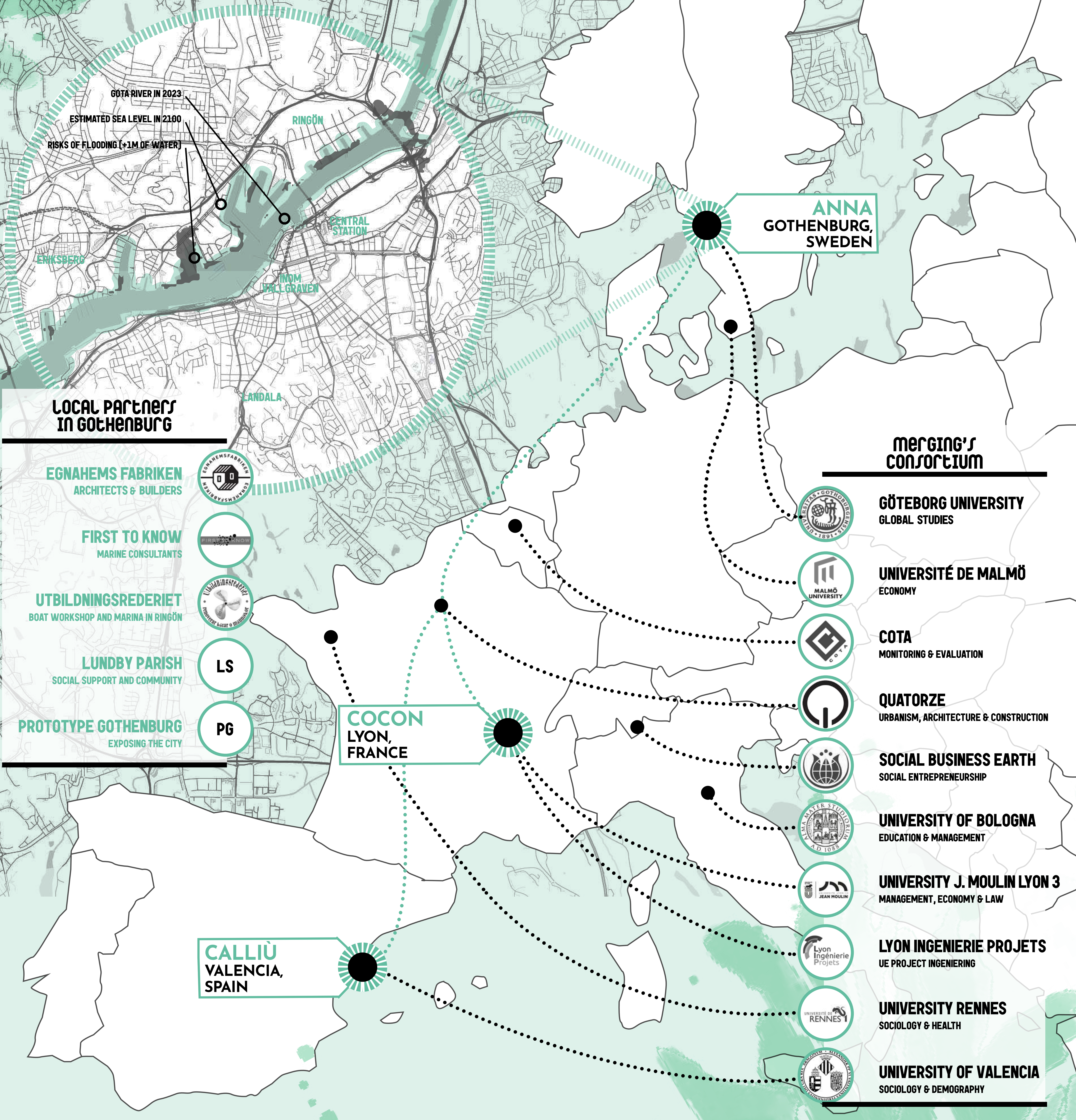
WWW.MERGING-HOUSING-PROJECT.EU
CONTACT@QUATORZE.CC





HOUSING & INTEGRATION IN EUROPE

WWW.MERGING-HOUSING-PROJECT.EU



PROTOTYPING GOTHENBURG

- the city as an exhibition

MERGING
INTEGRATION FOR MIGRANTS



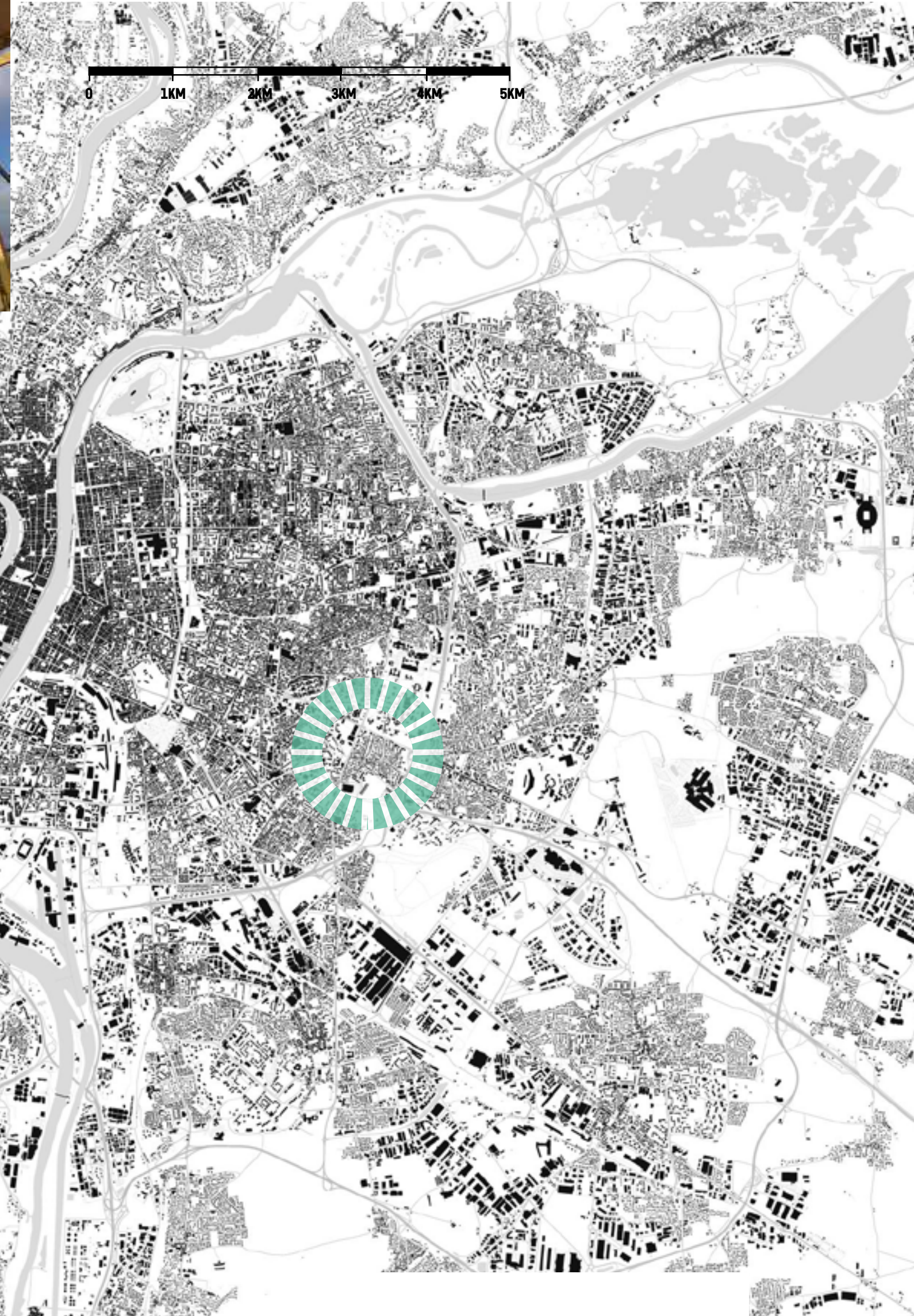
IN MERGING THE THREE HOUSING FOR NEWCOMERS PILOT PROJECTS ARE COORDINATED BY THE FRENCH NGO QUATORZE.

IN SWEDEN, WITH THE SUPPORT OF CIVIL SOCIETY ORGANISATIONS, THE PROJECT IS A COMPACT AND COMFORTABLE ECOLOGICAL HOUSEBOAT FOR TWO PERSONS OR A COUPLE. RESILIENT & MOVABLE IT CREATES AN ACCESSIBLE HOUSING CLOSE TO THE CITY CENTER SERVICES.



ANNA

GOTHENBURG, SWEDEN



IN FRANCE, WITH THE SUPPORT OF PUBLIC AND PRIVATE FUNDINGS & PARTNERS, THE PROJECT IS A LANDSCAPED PLOT WITH 7 MOVABLE HOUSING UNITS CALLED TINY HOUSES. TO FOSTER SOCIAL MIXITY & INTEGRATION, IT OFFERS A COMMUNITY GARDEN AND COMMON SPACES OPEN TO THE NEIGHBOURHOOD

COCON

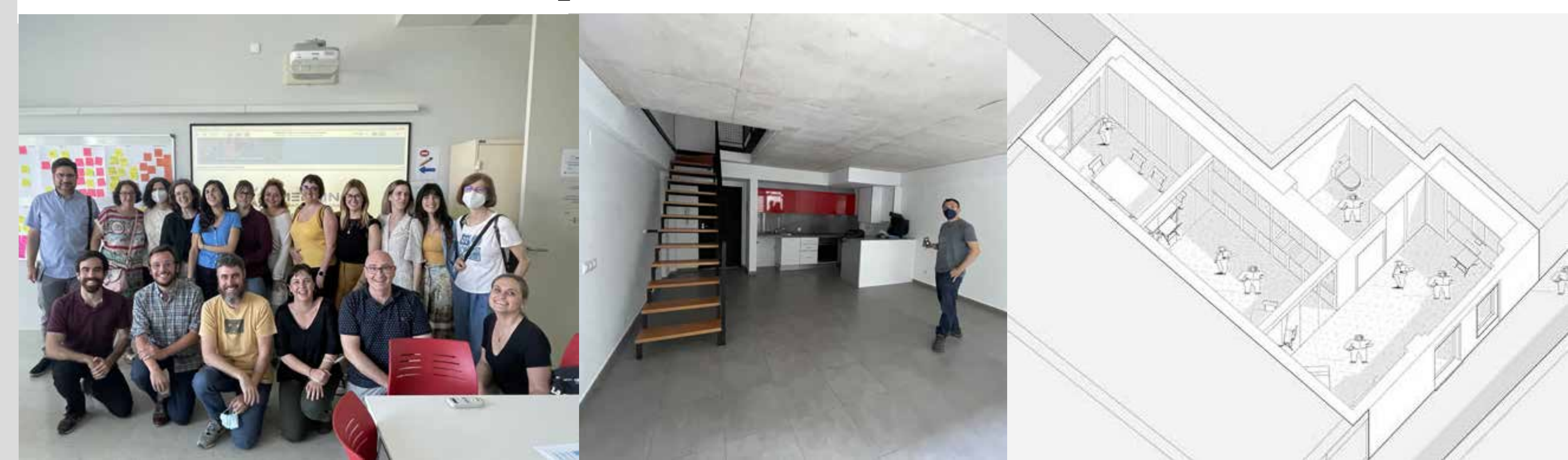
LYON, FRANCE



CALLIÙ

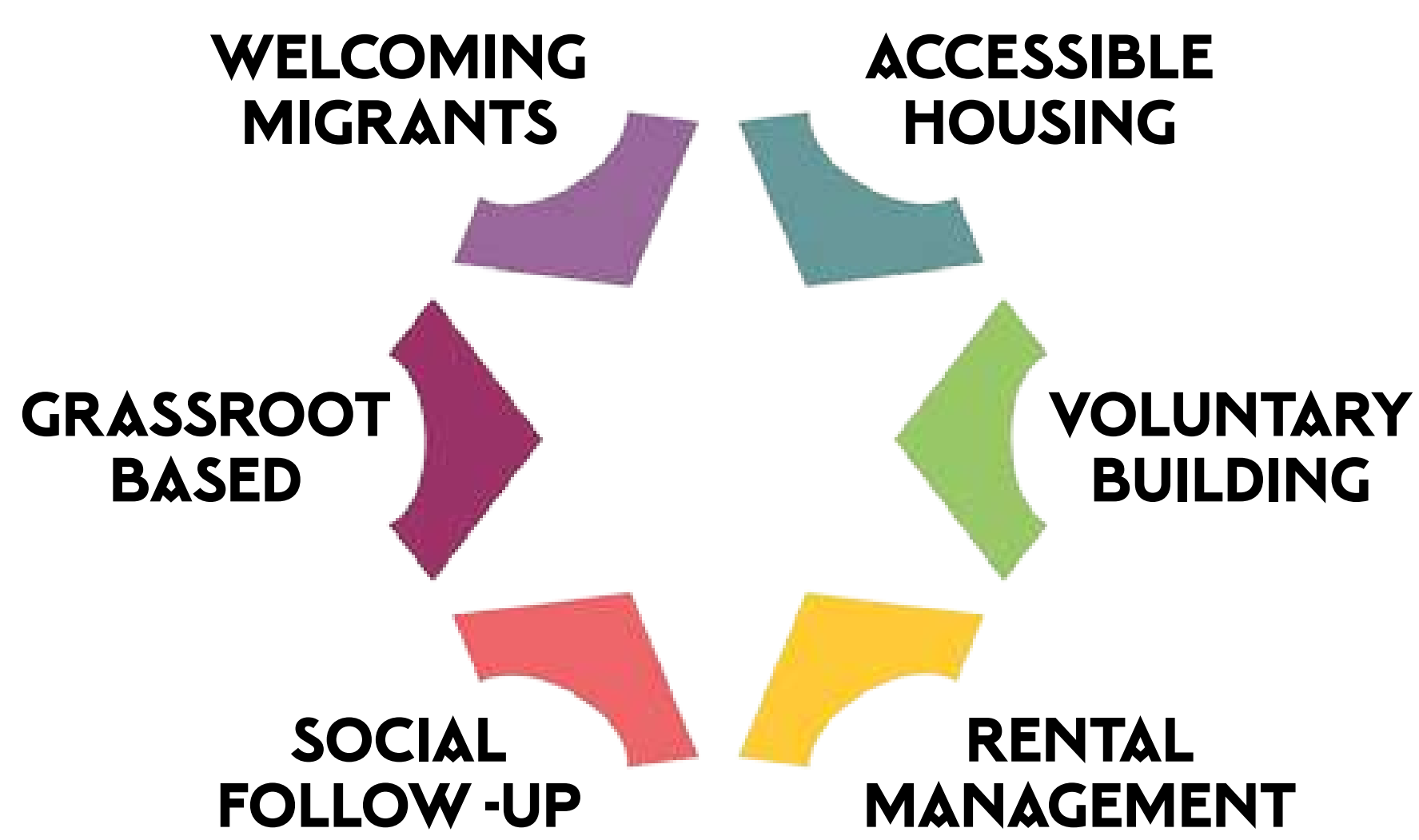
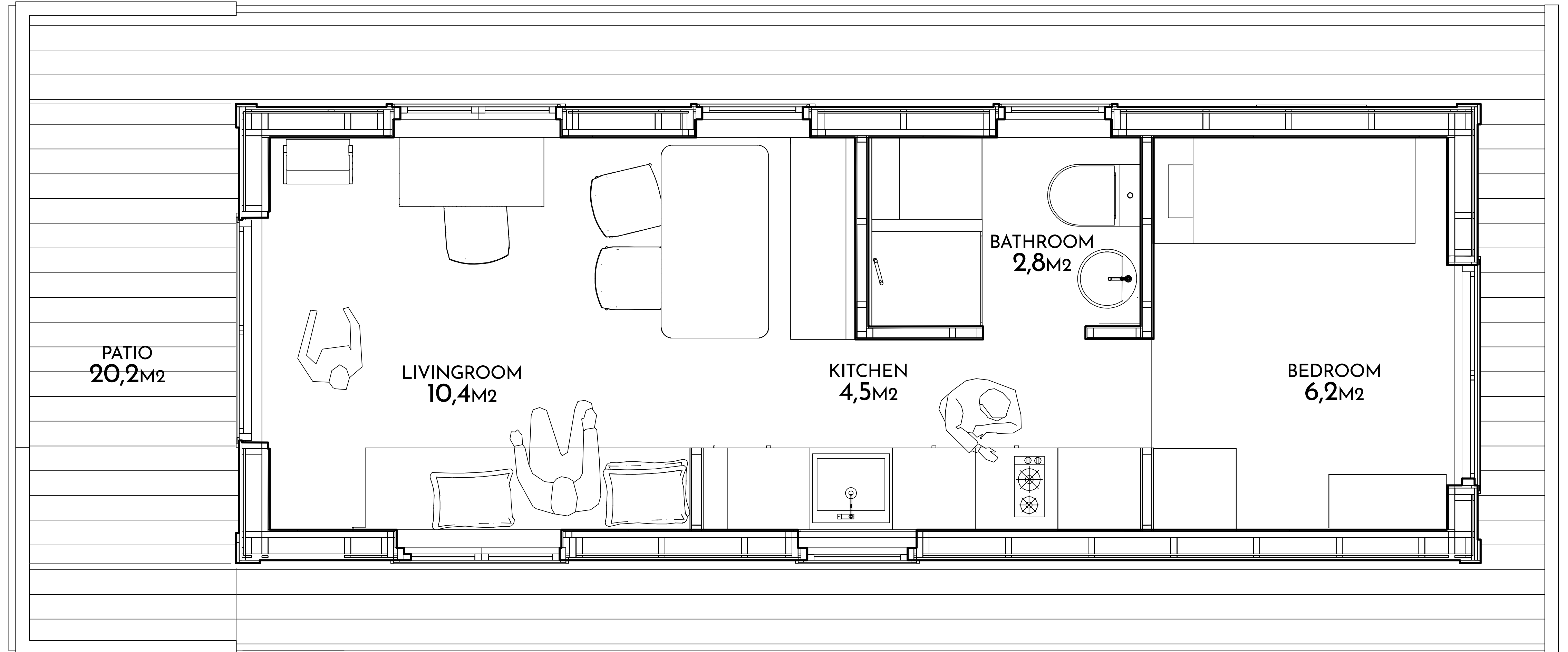
VALENCIA, SPAIN

IN SPAIN, WITH THE SUPPORT OF THE PUBLIC INSTITUTIONS, THE PROJECT IS A CONSTELLATION OF 7 FLATS IN THE OLDEST PART OF THE CITY. THEY ARE CONNECTED THROUGH A GROUND FLOOR PREMISE INTENDED TO BE A PLACE FOR THE SOCIAL FOLLOW UP, THE DIRECT BENEFICIARIES & OPEN TO THE NEIGHBOURS.



PROTOTYPING GOTHENBURG

- the city as an exhibition



ANNA

GOTHENBURG, SWEDEN

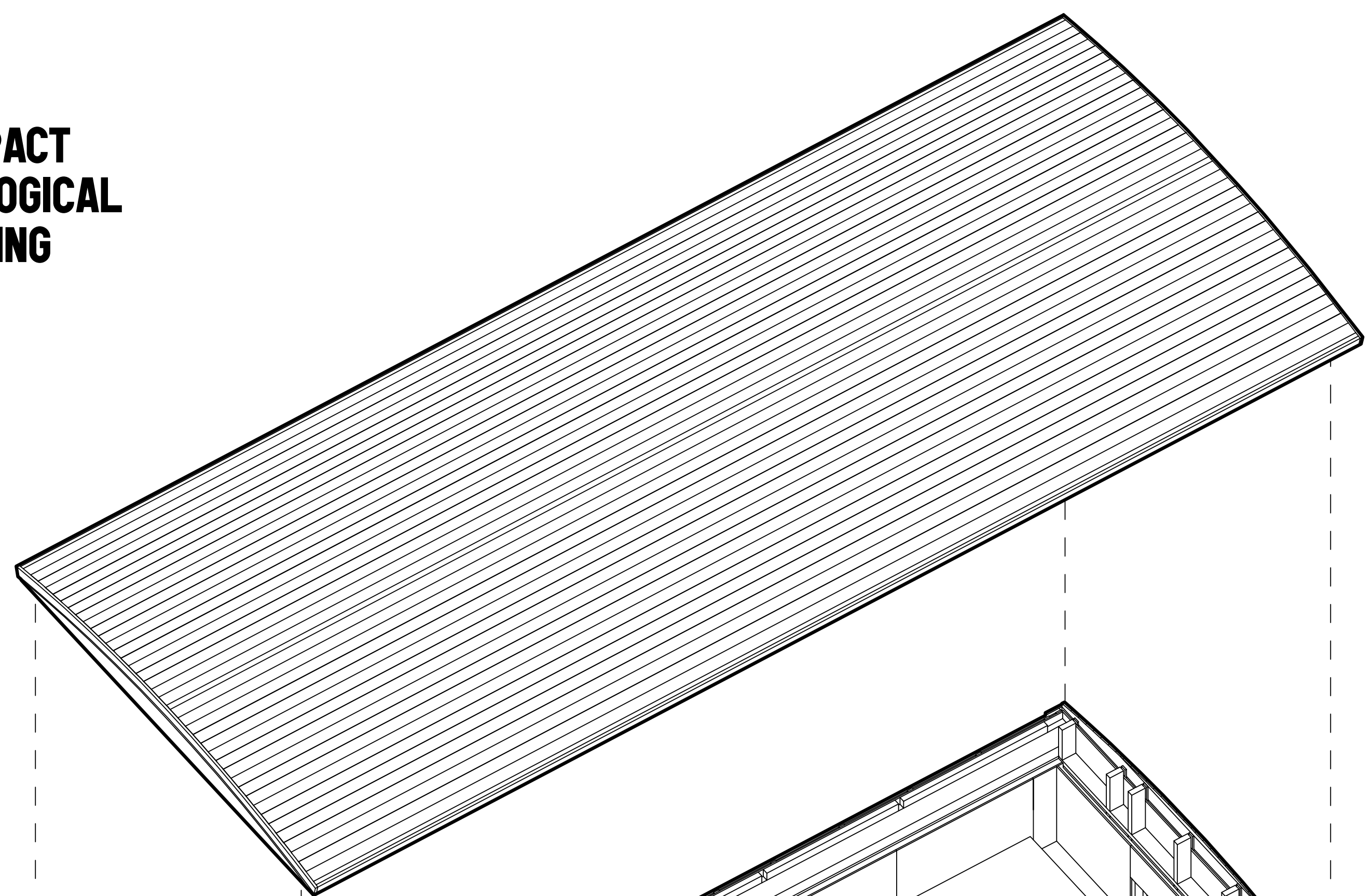
FUNDERS# European Union H2020 Research-action
PARTNERS# Quatorze, Egnahems Fabriken, 1st to know, UJML, UGOT, COTA, LIP
BUDGET# INVESTMENT 120'000€
 RENT To be defined

TYPE# Light Movable Habitat
AREA# 23.8m² livable space with 20.2m² outside terraces
LOCATION# Gothenburg, Sweden
STATUS# Under construction

TOTAL LIGHTWEIGHT INTERIOR FURNITURE & PEOPLE	8'850 KG
NORMAL MAXIMUM WEIGHT SNOW LOAD IN WINTER	2,500 KG
TOTAL MAX WEIGHT	11'350 KG
	2'325 KG
	13'675 KG

FROM 1ST TO KNOW EXPERT REPORT

COMPACT ECOLOGICAL HOUSING



WOODEN FRAME

ON WHEELS
ON LAND OR
ON FLOATING
STRUCTURE
ON WATER



ALL WINDOWS REUSED MATERIAL TRIPLE GLASS

